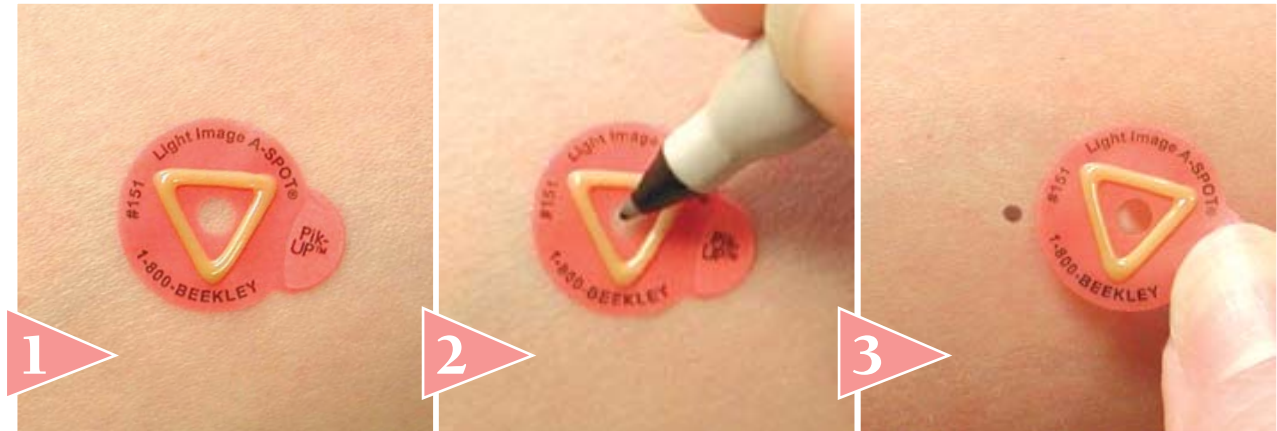


BEEKLEY MAKES A MARK IN BREAST IMAGING.



1 Position A-SPOT® over a palpable breast mass before a mammogram.

2 Mark the center hole with a Sharpie® pen.

3 Remove A-SPOT. The dot communicates the location of the palpable area to the ultrasonographer.

Beekley A-SPOTS® increases communication between mammography and ultrasound.

Beekley Light Image A-SPOT skin markers are perfect for marking palpable masses for mammography films. Simply take the mammogram and mark a dot in the center hole opening. This dot communicates the location of the palpable abnormality for the ultrasonographer, eliminating confusion of the area in question, and saving you time. *That's not just great communication.*

That's good business.

*One great skin marker
deserves another.*

FREE
Sharpie®
with your
first order.

TO ORDER A-SPOTS®

Call today! (Order Code: 151)

And get more out of your skin marking system.

1-800-233-5539

BEEKLEY
CORPORATION