

# AromaTabs®

aromatherapy for the clinical setting



**NEW**

**Dual tear notch feature!  
MAX SCENT and MIN SCENT  
for a stronger or lighter  
scent preference.**

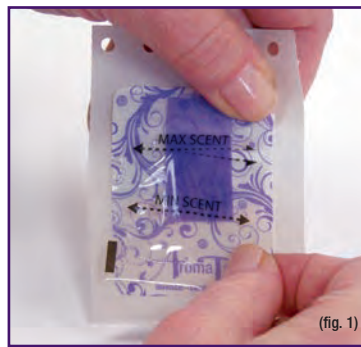


## Instructions for Use

For Best Results, Apply to Patient Prior to Beginning the Exam

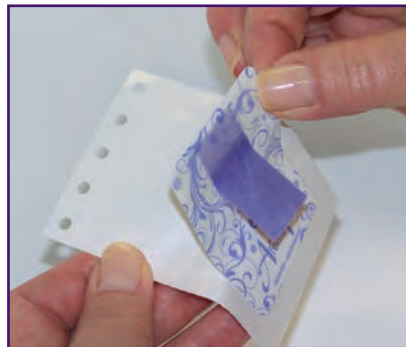


- 1) Pull a strip of AromaTabs from the dispenser box. Separate one AromaTabs by tearing the perforated paper backing between the labels.



- 2) Tear packet at MAX SCENT (fig. 1) for the full affect of the essential oil OR tear packet at MIN SCENT (fig. 2) for a lighter affect of the essential oil.

Using your thumb, press down and hold the self-adhesive label in place on the paper backing. With your other hand, pull and tear the clear cellophane pouch at the preferred NOTCH to expose the scented tab.



- 3) Lift the self-adhesive label off the paper backing.



- 4) Place self-adhesive label on the patient's upper chest, hip, thigh or other alternate location *prior to beginning exam.*

**BEEKLEY MEDICAL**  
*when your diagnosis must be right™*

One Prestige Lane, Bristol, CT 06010 Tel: 1-800-233-5539 or 1-860-583-4700 Fax: 1-800-735-1234 www.beeckley.com  
0112

