

Introducing

Brava™

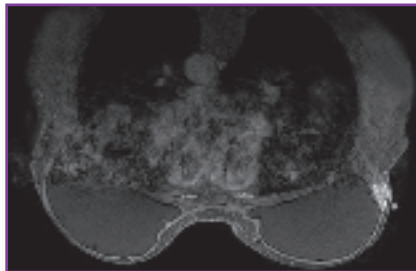
skin markers for breast MRI

By providing a line of communication between patient, technologist and radiologist, Brava skin markers serve as an extremely valuable tool within breast MRI.

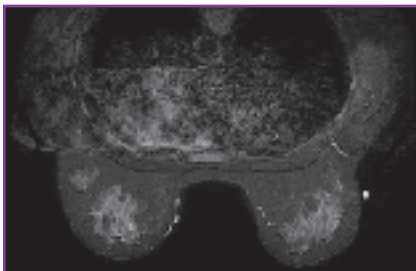


Most facilities performing breast MRI currently identify areas of interest through the use of an external skin marker. By using a Brava skin marker on the breast to identify areas of interest such as surgical scars, biopsy sites, palpable masses or nipples, the radiologist is provided with information related to a specific area that otherwise may not have been as easily identified.

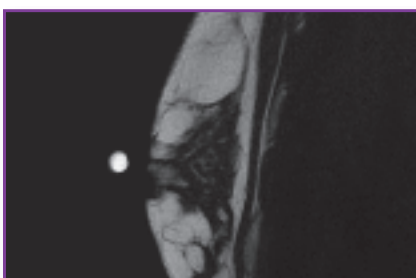
Designed Specifically for use in Breast MRI, Brava skin markers...



PALPABLE AREAS



SURGICAL SCARS



NIPPLES

- **Offer Options**
With 2 varieties and 4 sizes to choose from there is a Brava skin marker for all of your breast MRI needs.
- **Help to Reduce Patient Anxiety**
The feminine design and soft, soothing colors can calm the patient while also helping to take their mind off the exam.
- **Provide a Professional Alternative**
Eliminates taping a mustard pack or vitamin e capsule to such a sensitive area as the breast.
- **Add Precision**
Whether you need the marker to image on 2 or 9 slices, there is a Brava skin marker to assist technologists in communicating the exact area of interest on the breast.
- **Are Easy to Use**
Simply peel and stick. No more fumbling with tape or worrying about a vitamin e capsule melting on the breast.
- **Eliminate Indentation**
Brava skin markers lay on top of a self adhesive label, eliminating indentation caused by older methods of marking.
- **Are Unmistakable**
Bright and consistent imaging on every sequence allows for unmistakable communication between patient, technologist, and radiologist.

To begin using Brava on all your breast MRI exams contact your Beekley Sales Specialist today at
1-800-BEEKLEY (233-5539) or on the web at www.beekley.com