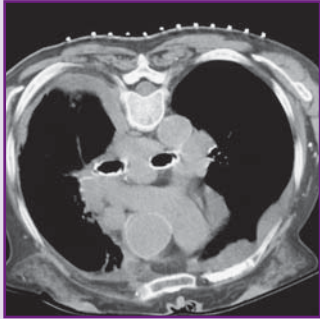
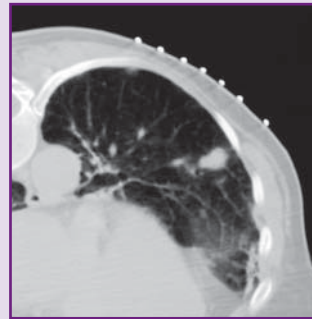


GuideLines Biopsy Grids Offer The Most Precise Method For Localization Of The Needle Entry Site

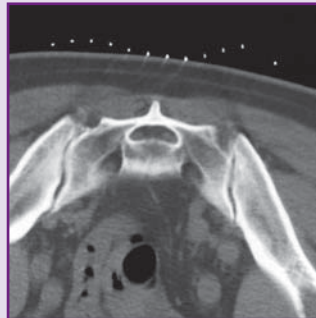


7.0" x 7.5" GuideLines biopsy grid covers a large surface for precise localization of the needle entry site. This assists in performing CT guided biopsies with a single stick, even in the most difficult areas.



4.0" x 5.0" GuideLines biopsy grid contours to the body of the patient, eliminating the potential for errors when registering the mark. This allows for the biopsy to be performed in an accurate and efficient manner with minimal inconvenience to the patient.

Other Methods Can Result In Inaccurate Marks Which May Result In Multiple Sticks When Localizing The Needle Entry Site



Other items used to localize needle entry sites tend to lift off of the patient, making it difficult to generate an accurate mark in relation to the image on the radiograph.