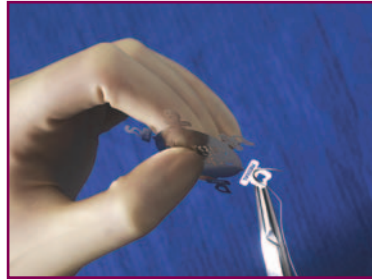
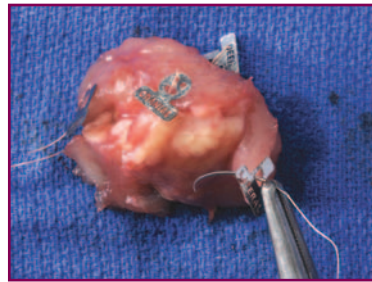


MarginMap Instructions for use:

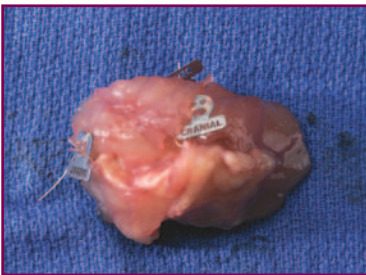
1. Simply thread the charm on to a secured suture, twist base, and the charm will easily detach.



2. Suture MarginMap™ charm on to the corresponding specimen margin. Use a secure but not taut stitch.



3. Repeat until the desired number of margins are attached to the specimen (note: all six charms do not need to be used for identification).



MarginMap...
works like a charm.