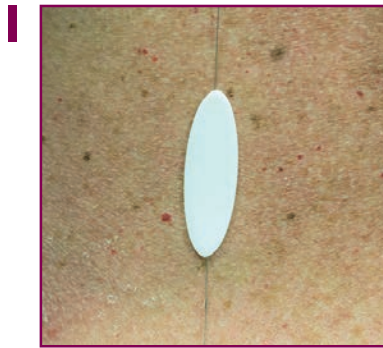


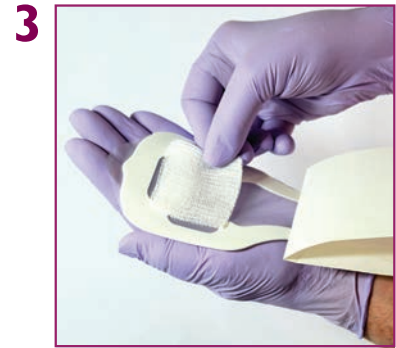
## Instructions for Use



Tack down wire with oval foam tab.



Pull paper liner away from large square end to perforated line.



Place enclosed gauze under large square end or over wire exit site.



Position and adhere large square end directly over wire exit site.

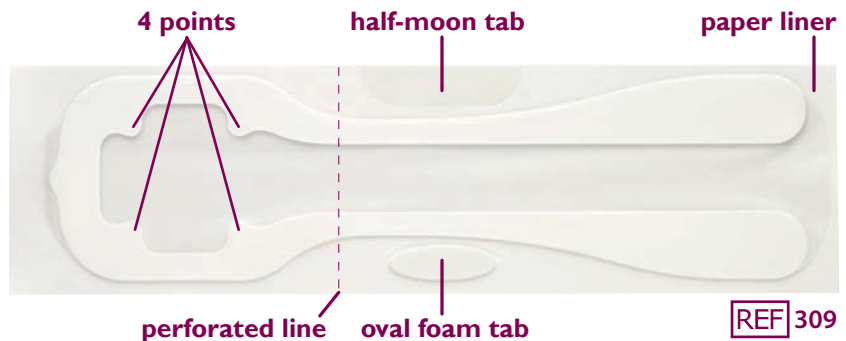


Peel off remaining paper liner and position long strip over wire. Press to apply adhesive border. If needed, cut off excess length of strip.



Pop out half-moon shaped tab from side of paper liner. Apply tab to the cut end to use as pick-up tab for removal later.

**7** Prior to the surgical procedure, remove Cradles needle localization wire protectors by gently pulling up on either end.



Manufactured by Beekley Corporation

One Prestige Lane, Bristol, CT 06010 USA

Tel: 1-800-233-5539 or +1-860-583-4700 Fax: 1-800-735-1234 www.beekley.com

BEEKLEY, BEEKLEY MEDICAL, CRADLES, and WHEN YOUR DIAGNOSIS MUST BE RIGHT are Reg. U.S. Pat. & Tm. Off. BEEKLEY is a Registered Community Trademark. BEEKLEY is a registered trademark in Canada.

© 2016 Beekley Corporation. All rights reserved.

### WARNINGS AND PRECAUTIONS:

- Single Patient Use Only;
- Do Not Reuse (X)
- Remove After Use
- Non-Sterile (triangle with X)
- Latex-Free



**EMERGO EUROPE**  
Molenstraat 15  
2513 BH, The Hague  
The Netherlands

REV: CRA\_IFU\_0716