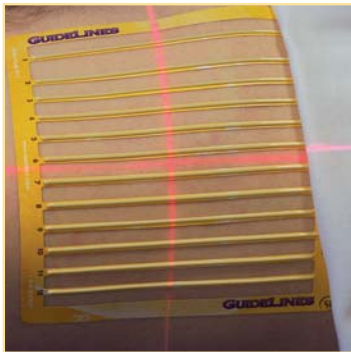


GUIDELINES®

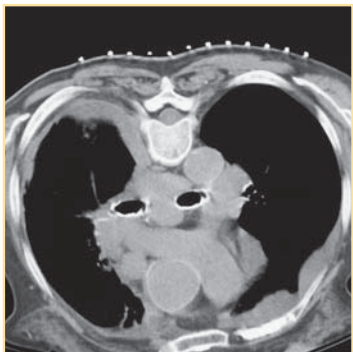
CT grid for localizing needle entry sites

Avoid misregistration of skin marks and the need for repeat needle adjustments with GuideLines® CT biopsy grids.

GuideLines®

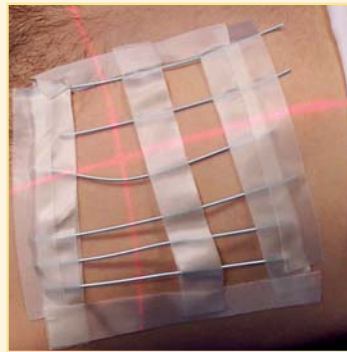


Precision engineered and easy to use. Uniform spacing between parallel lines allows for single stick biopsies; helps minimize patient's exposure to radiation.

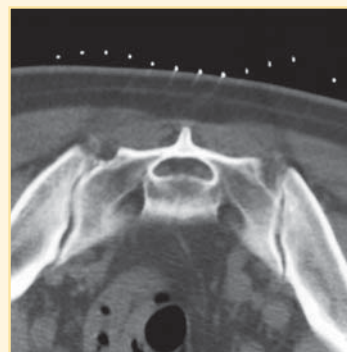


All-over medical grade adhesive contours to any body part without buckling – optimizing secure placement throughout the procedure.

Other Methods



Homemade grids are imprecise as well as time consuming to make and apply.



Other products tend to lift off patient making it difficult to generate an accurate mark in relation to the image.



REF 217 **QTY** 15 / Box

- 7" x 7.5" grid with twelve non-metallic lines
- ideal for biopsies of the abdomen and other large areas



REF 117 **QTY** 20 / Box

- 4" x 5" grid with seven non-metallic lines
- ideal for the neck and other small areas

Manufactured by Beekley Corporation

One Prestige Lane, Bristol, CT 06010 USA Tel: 1-800-233-5539 or +1-860-583-4700 Fax: 1-800-735-1234 www.beekley.com

BEEKLEY and GUIDELINES are Reg. U.S. Pat. & Tm. Off. BEEKLEY is a Registered Community Trademark. BEEKLEY is a registered trademark in Canada.

© 2015 Beekley Corporation. All rights reserved.

REV: GL_INF_0115

WARNINGS AND PRECAUTIONS:

- Single Patient Use Only;
- Do Not Reuse
- Latex-Free
- Lead-Free
- Non-Sterile



EC REP

EMERGO EUROPE
Molenstraat 15
2513 BH, The Hague
The Netherlands